

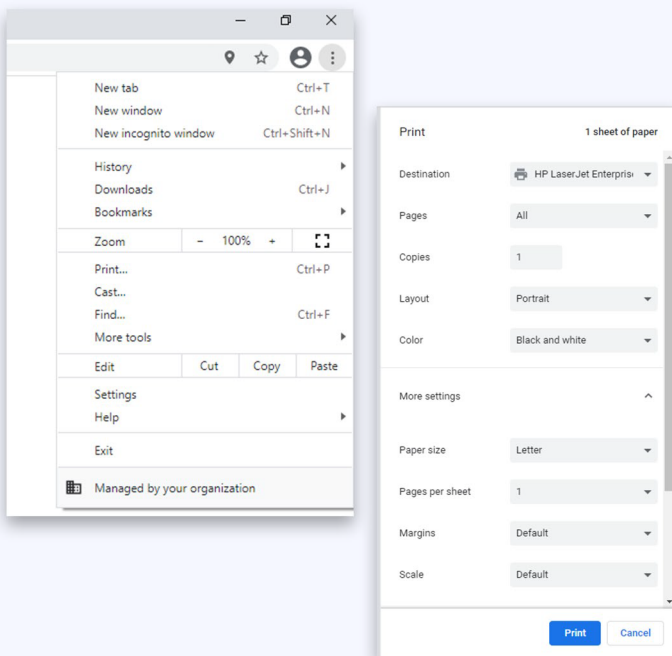


# EDRS New Browser Quick Start Guide

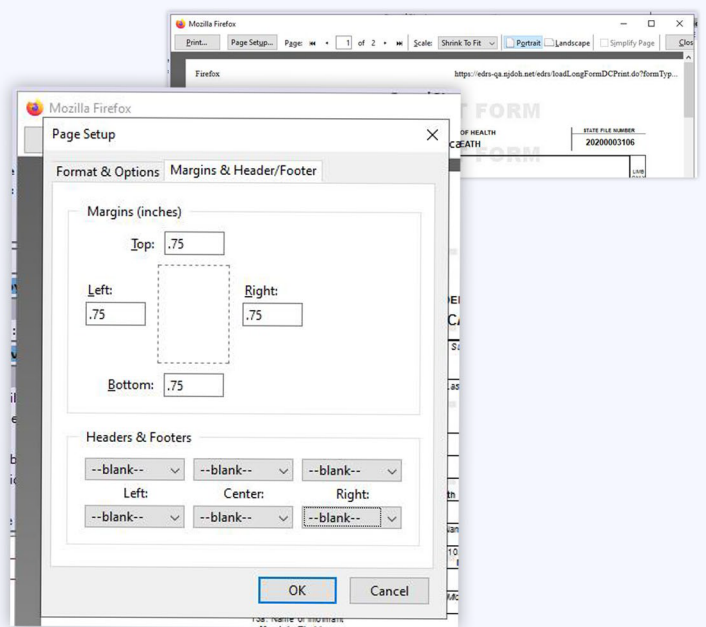


Please be advised EDRS is now available to use with additional web browsers. Printer settings must be checked before printing just like in Internet Explorer. Be sure to confirm that the paper size is correct for the form you are printing, that margins are set to minimal and that header and footer boxes are unchecked so as not to be included. This process will vary across browsers. Contact your IT department for help with setup.

## Chrome Settings



## Firefox Settings



### ***DID YOU KNOW?***

If you currently access EDRS via a desktop shortcut, you will need to delete the shortcut and create a new one using your preferred browser to open or change the shortcut's 'open with' program

**for further information, contact your IT department**